

- See your internal communications network like never before
- Improve utilization of your time
- Easily bring telecom info to your desktop or tablet and link data with facility floor plan drawings and vice versa

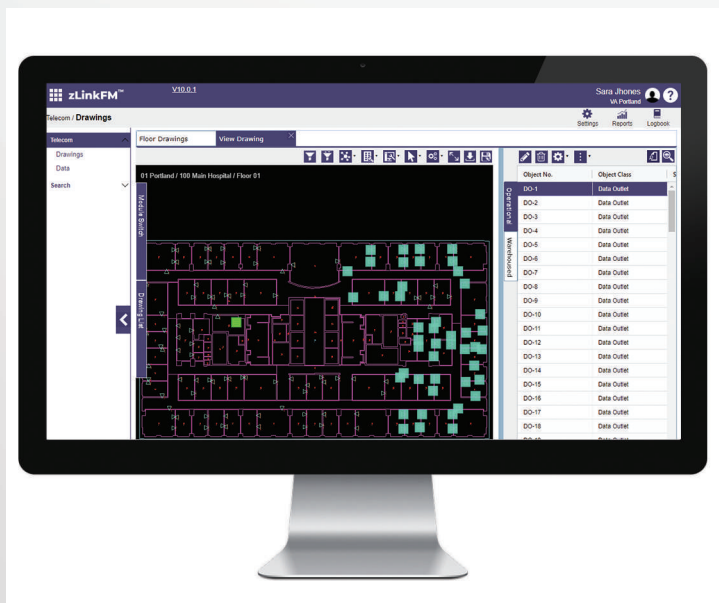
Do you know where all your data and voice jacks are? Where are all the hubs and routers? In the event of a disaster, do you have sufficient documentation to re-establish your communications system? Let /Drawings® Telecom Module help you. The telecom module provides you with the ability to manage frequent changes by providing a visual system that will significantly enhance your ability to locate and troubleshoot lines, jacks, routers, and more.

Link Telecommunications Equipment with Physical Space

zLinkFM™ lets you visually associate telecom equipment with a specific work area, or office space. The Telecom module maintains data relating to telecom equipment by site, building, floor, equipment assignments, and more.

Moves in sync with Employees

Plan and research your employee-related communication moves easily from your desktop. Look at the room layout and check the existing telecom situation, then if necessary choose the right location within a work area or office space, for communication jacks and other required equipment. zLinkFM™ will help ensure that you are following any local and corporate installation guidelines. Use the data for space and communications planning.

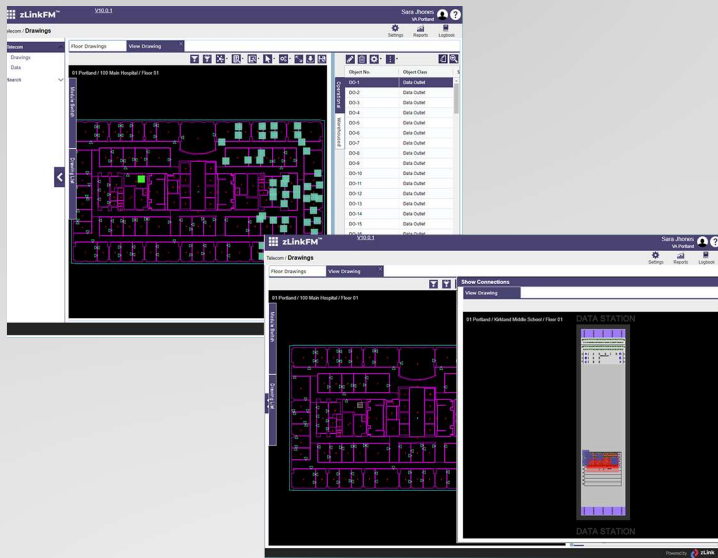


Value Proposition

- Visualize connectivity
- Easy to manage
- Administrative security protocols
- Manage data access in shared spaces

Know Who, What, and Where

When managing facility telecommunications equipment, it is important to know what the item is, where it is located, to whom it is assigned. The zLinkFM™ Telecom module brings drawings, data and reporting all together for you in one powerful, easy to use, tool.



Acquisitions, Mergers and Consolidation Challenges

When organizations change through acquisitions, mergers and consolidation, the physical infrastructure is COMMUNICATIONS. Knowing where employees are currently located, what their communication equipment usage currently is, and what it is anticipated to be in the future, will help the organization and management this critical planning process.

Control your Equipment

Capabilities of business communications equipment are constantly changing. The demands of users for better equipment, with more features, are obstacles management must routinely deal with. Telecommunications

equipment costs need to be kept under control, and at the same time, there is a critical need to keep employees, customers, clients and prospects motivated and adequately equipped to perform their job functions. Are their work areas and offices appropriately equipped for their communication needs? Easily answer these questions with the zLinkFM™ Telecom Module.

Extensive Telecommunications Equipment Reporting

Generate detailed reports on all your facilities telecommunications equipment by site, building, floor, etc. Easily export the reports to spreadsheets or other applications. Create graphic images for display showing architectural floor plan drawings and the accurate location along with specific information on all telecommunications equipment. Share the reports easily with your colleagues and management for quick decision-making.

Elaborate Access Control

Some telecommunications equipment types and locations might be considered sensitive or confidential. Only those authorized would be able to access it. You can also restrict access to certain sites, buildings, floors and work areas.



zLink, Inc.

141 Parker Street, Suite 311, Maynard, MA 01754

Tel: 978-309-3628, Fax: 978-309-3629

www.zlinkcorp.com