

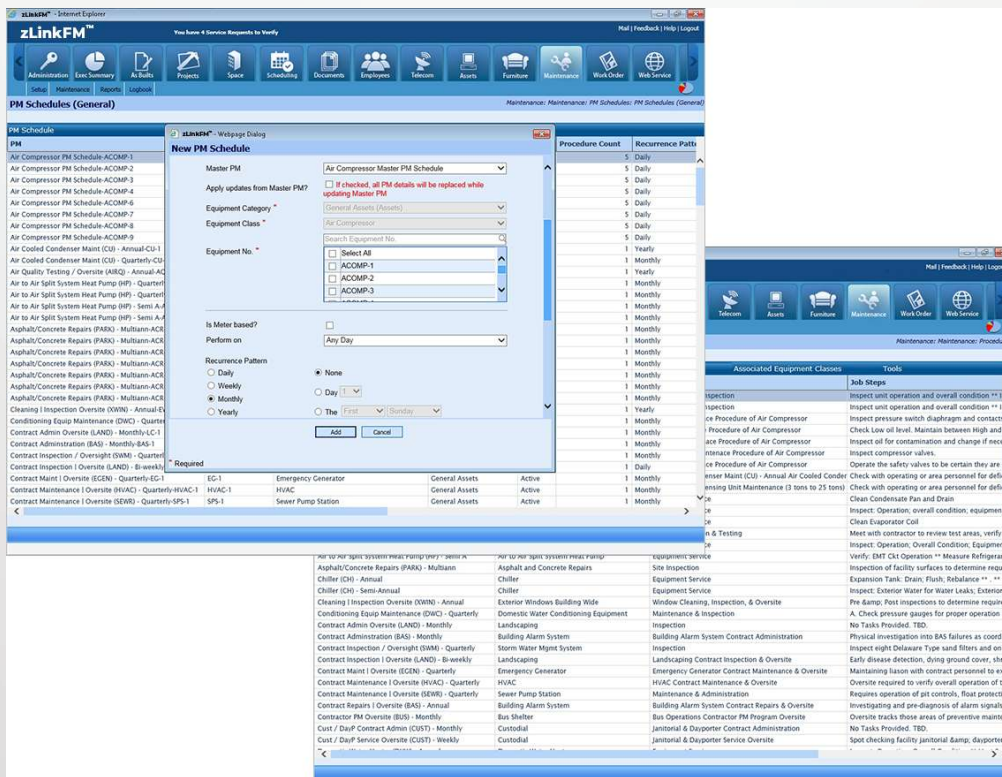


- Integrated Maintenance Management Solution
- Optimize Equipment Life Cycle
- Minimize Maintenance Costs and Repairs
- Capture and Document Key Maintenance Metrics

# Preventive Maintenance Solution

providing extensive operational support for managing and tracking scheduled maintenance functions.

Does your business have an organized system in place for maintenance procedures and activities? Does your system easily facilitate PM tasks for all types of equipment? Do your maintenance schedules optimize equipment availability? The zLinkFM™ Maintenance Management ensures an efficient PM process which includes Web monitoring of warranties and specifications, maintenance history, and scheduling. This provides the ability to identify issues and create strategies for managing facility maintenance.



## Value Proposition

- **Enhanced Operations**  
Minimize facility maintenance downtime.
- **Improved Productivity**  
Streamline the PM process.
- **Reduced Costs**  
Decrease repairs and replacements, reduce long-term maintenance costs, and extend assets life cycle.
- **Informed Planning**  
Accurate maintenance history facilitates planning for equipment upgrades and replacements and budgeting future maintenance.
- **Supported Mobility**  
Manage the maintenance application on-the-move “anytime, anywhere” through mobile devices (i.e. tablet / smart phone).

zLinkFM™ You have 4 Service Requests to Verify Mail | Feedback | Help | Logout

Work Order: Reports: PM Work Orders: Monthly Report - Open

01 Aug 2014 to 31 Aug 2014 Asada Corporation 09 Sep 2014 02:48 AM Page 27 of 62

Ticket #	Status	Assigned To	Title	Created	Last Updated
<b>Comments:</b> Work Order Generated Work in Progress					
WO503	Work in Progress	Work in Progress	Air Compressor PM Schedule-ACOMP-7	09 Dec 2013	10 Dec 2013
<b>Comments:</b> Work Order Generated Work in Progress					
WO504	Work in Progress	Work in Progress	Air Compressor PM Schedule-ACOMP-7	09 Dec 2013	10 Dec 2013
<b>Comments:</b> Work Order Generated Work in Progress					
WO505	Work in Progress	Work in Progress	Air Compressor PM Schedule-ACOMP-7	09 Dec 2013	10 Dec 2013
<b>Comments:</b> Work Order Generated Work in Progress					
WO506	Work in Progress	Work in Progress	Air Compressor PM Schedule-ACOMP-7	09 Dec 2013	10 Dec 2013
<b>Comments:</b> Work Order Generated Work in Progress					



## Integrated Facilities Management Solution

### ● Preventive Maintenance

zLinkFM™ PM helps customers manage and maintain equipment and facilities in optimal operating condition by providing for systematic inspection, detection, and correction of incipient failures either before they occur or before they develop into major defects.

### ● PM Schedules

A PM Schedule specifies the PM procedure to be performed, the starting date and the frequency with which it should be repeated. It is grouped by location, equipment class, or types of tasks that are based on Master PM Schedule templates. General schedules then drive actual schedules and are used to create work orders.

### ● PM Procedures

Template driven PM allows reengineering maintenance processes and attaching relevant drawings and documents. A PM procedure defines the job steps and the safety steps to be followed while performing a PM activity for an equipment class.

### ● Integrate PM Status and Work Orders

Automate the generation of PM Work Orders, schedule routing based on equipment or location hierarchy, and alerts for PM due in the near term. Manage activation or deactivation of PM related to seasonal factors. Track PM and Work Order status.

### ● Optimize Equipment Life Cycle

Effectively managing PM can extend the life of your equipment, as well as reduce downtime, repairs, replacements, and adverse impact on the company and customers. Furthermore, a well managed PM process will minimize costs.

## Cost Allocation

### ● Cost and Chargeback

Manage and track cost breakdown, chargeback to departments, and easily export data to corporate systems. The Maintenance Module maintains labor cost data related to individual employees and contractors. Cost data for specific system, sub-systems and components enable the system to create the total cost estimates and actual for completed work requests.

## Key Maintenance Metrics

### ● Reporting

The Maintenance Module includes a powerful and extensive set of reports that provide a complete view of your facility maintenance management. Additional reports use the historic time cost, meter reading, and condition information collected by the work order system to facilitate analyses and trends. Share the reports easily with your colleagues and management for quick decision-making.



# zLink, Inc.

141 Parker Street, Suite 311, Maynard, MA 01754

Tel: 978-309-3628, Fax: 978-309-3629

www.zlinkcorp.com