



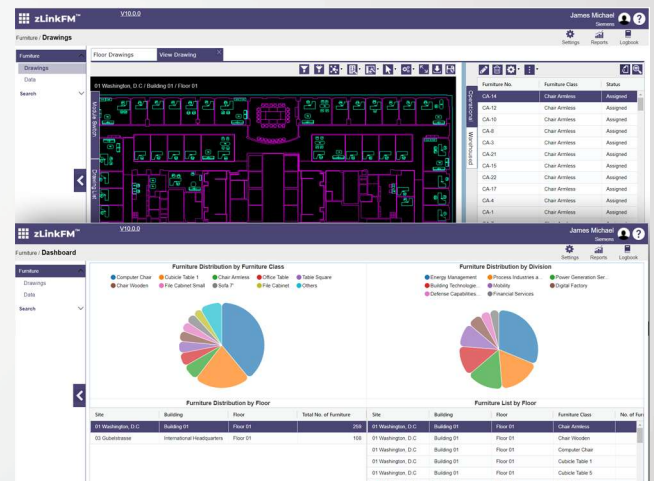
- Visualize Furniture Inventory and Layout
- Manage Acquisition, Management and Use
- Plan Furniture Moves, Storage and Utilization
- Generate Detailed Accurate Financial Reports

# Furniture Inventory Control that works.

Improve your furniture inventory audits and furniture utilization by having the furniture scaled and placed on floor plan drawings.

*Can you easily locate all the furniture in your facility? Do you have an organized system for inventorying your furniture? Can you easily plan the design and furniture placement for a new office space?*

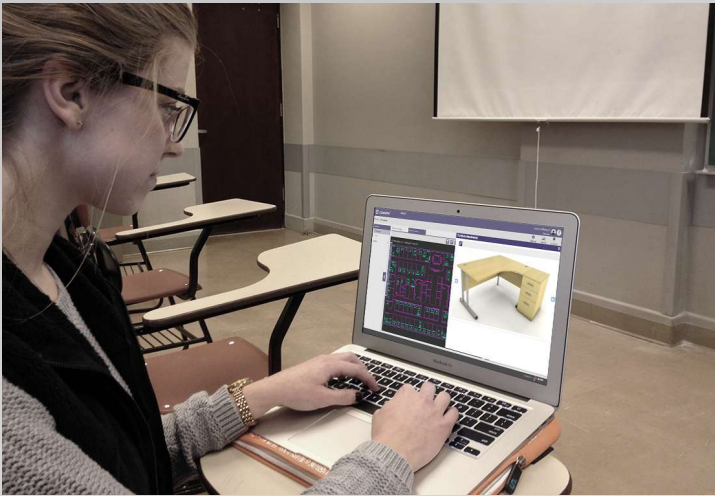
zLinkFM™ Furniture Module is the solution to these challenges. It keeps track of furniture and the associated data; such as location, size, color, number of units, maintenance requirements, warranties, acquisition date, costs and depreciation. Easily locate any piece of furniture in the architectural floor plans to provide a graphical view of the location. Customize reports for a more in-depth view of furniture inventory, warranties, and maintenance records.



## Value Proposition

- **Increases Productivity**  
Employees can locate furniture for department moves. Easily track furniture with moves.
- **Improves Operational Efficiency**  
Links to several other modules within zLinkFM™ to allow for complete management of the inventory
- **Produces Better Assessments**  
Depreciated costs based on acquisition and conditions assessment
- **Displays Speedy Furniture Data**  
Quickly locate, maintenance info, serial numbers, and the location of furniture





## Integrated Furniture Management Solution

- **Easy Furniture Searches**

Powerful search functions allow searches using simple drop down data lists or complex queries. Furniture can be scaled, inserted, and orientated within a given space on a floor plan drawing. Linking the scaled furniture to the floor plan and display the details of all the furniture that is already assigned in various drawings and furniture that is yet to be placed in drawings. You can display both placed and warehoused furniture. Search the entire enterprise for furniture and their location within a particular building, on a specific floor, a particular department or area. Search furniture by a unique identifier.

- **Furniture Tracking**

Helps organizations to identify missing or misplaced items, stored items like function room & event furniture, or newly introduced furniture with respect to zLinkFM™ database. Record the condition of the furniture to identify and allocate budgets for possible replacements in near future. Include photos of the furniture, documentation, specifications, warranty, and any other unique identifier that is pertinent for managing the furniture's life cycle. Add, remove, or change data items easily. Add as many categories to furniture's data as needed.

## Cost Allocation

- **Cost Savings**

Furniture is another large part of operating costs for organizations. Typically, wear factors are important, so when selecting (and tracking) furniture there are important items to consider. Function, size, final location, color, form factor, cost, number of units, durability, maintenance requirements, and warranty. Being able to accurately inventory furniture and record warranties and conditions can be a huge cost savings, help predict the furniture's life-cycle, and help budget for future replacement.

## Key Business Metrics

- **Extensive Reporting Capability**

The furniture module will actually report the balance of space left once the furniture is placed. Utilization of space is essential for controlling costs, improving productivity, and maintaining employee morale.



# zLink, Inc.

141 Parker Street, Suite 311, Maynard, MA 01754

Tel: 978-309-3628, Fax: 978-309-3629

www.zlinkcorp.com