

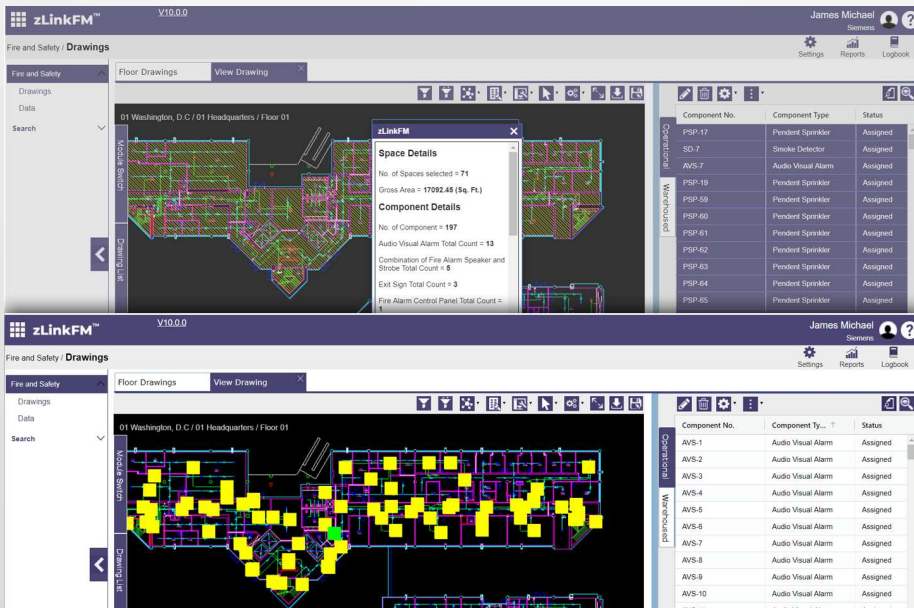


- Integrated Facility Management Solution
- Dynamic Linkage of FLS Data and Drawings
- Immediate Access to FLS Information
- Effectively Manage Regulatory FLS Compliance

# Bringing Visual Smart Mobile Technologies To Fire Life Safety Solutions.

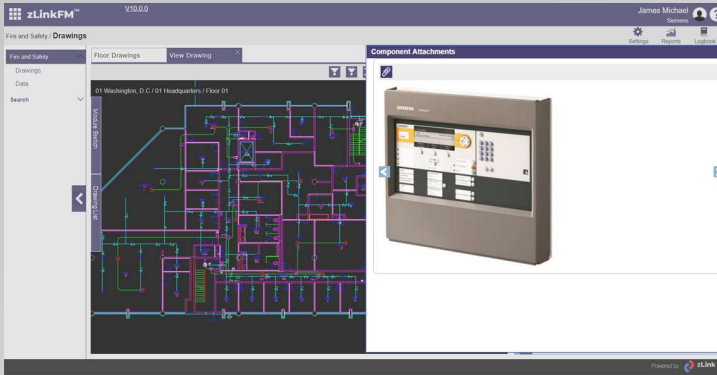
Effective FLS response requires fast delivery of facility data and drawings in an easily accessible format to first responders in an event of a disaster.

Do you know the readiness status and location of all your facility's fire life safety systems? Is the database of your fire life safety devices comprehensive and available to the mobile workforce? zLinkFM™ FLS Module provides a visual integration of all information related to critical FLS systems. Using a drawing-centric approach available on mobile platforms enables a visual interface for managing Fire Life Safety operations. It also keeps your FLS data organized and secured in a virtual library.



## Value Proposition

- **Provides Easy and Instantaneous Access**  
On and off site anytime to all responders.
- **Minimizes Costs**  
Effortlessly maintain the FLS system by simplifying inspection procedures and PM scheduling.
- **Supports Safer Workplace**  
Lowers accident risks, facilitates emergency planning, and prompts personnel to adhere to national and local safety codes.
- **Coordinates FLS Data**  
Keeps safety information current with building regulations changes.
- **Organizes FLS Data**  
All safety data is centrally located in a secure database.
- **Offers Mobility**  
FLS data and drawings on mobile platforms for maintenance, inspections and emergency response.
- **Ensures Fast Emergency Response**  
Monitor and deliver alarms on smart devices.



## Integrated Facility Management Solution

zLinkFM™ system optimizes FLS systems utilization, facilitates management of all FLS information and requirements, ensures timely preventive maintenance, and automatically generates accurate reports of FLS system status for compliance monitoring.

Specifically, zLinkFM™ Fire Life Safety Module helps track, manage, and maintain all the fire and safety equipments in the context of space. This provides an easy visual interface to locate FLS system components to facilitate inspections and analyze code compliance. In addition, it facilitates organized documentation of the Fire Protection system linking riser diagrams, floor plan drawings, and other available documents.

- **FLS Data Linkage With Drawings**

All FLS systems and components are linked to As-Built floor plans. Separate FLS system drawings are referenced to common floor plans to provide a comprehensive view of the total impact of all FLS systems together.

- **Safety-related Building And Device Data**

The number of devices that you can store in the zLinkFM™ system is unlimited. Start with the most critical items and incrementally add other items as required. These include:

- Smoke detectors, alarm systems, fire extinguishers, and sprinkler systems.
- Evacuation plans, emergency access, egress routes, hallways, stairs, doors, ramps, balconies, fire walls, and fire doors.
- Hazardous material and combustible storage areas.

## Mobile Operations

zLink has made it easy to manage FLS operations while on-the-move. zLinkFM™ Fire Life Safety Module is available on Apple and Android tablets and smart phones. Use the mobile devices to scan fire and safety equipment using barcodes and retrieve all information including maintenance history. It's easy to update maintenance and inspection details right from the mobile extensions. Also, mobile devices allow immediate access to FLS data which is especially important in emergency situations.

## Maintenance, Compliance, And Inspections

Regular maintenance and inspection of equipment greatly decreases the likelihood of a catastrophic event. With the integrated FLS solution, maintenance schedules are easily managed. The zLinkFM™ tool automates and coordinates inspections, maintenance and service requirements, as well as any other local ordinance codes. zLinkFM™ keeps facility managers proactive and responsive to these critical safety systems.

- **Regulations**

Regulatory compliance requires maintaining an accurate set of FLS drawings that show key life safety components. Compliance mandates as well as inspection and maintenance data for critical FLS assets in the facility are organized and documented. The FLS components are easily located on the floor plan and the state of test and readiness is always available.

## Emergency Response

Speed is vital to saving lives and property during an emergency response. Collaborate with first responders by providing access to zLinkFM™ by the web. Be able to view emergency access and egress routes so fire responders can reach and enter buildings and exit buildings safely. All stakeholders can quickly access your facilities' emergency and critical information securely via the web from their PC, laptop, or mobile device.



# zLink, Inc.

141 Parker Street, Suite 311, Maynard, MA 01754

Tel: 978-309-3628, Fax: 978-309-3629

www.zlinkcorp.com