



- Integrated Asset Management Solution
- Improve Operational Efficiency
- Simplify Cost Management and Charge-backs
- Generate Detailed Accurate Financial Reports

zLinkFM™ Asset Management

works to provide that competitive advantage with its superior capability to track, manage, and maintain all the assets in an organization, as well as facilitate planning.

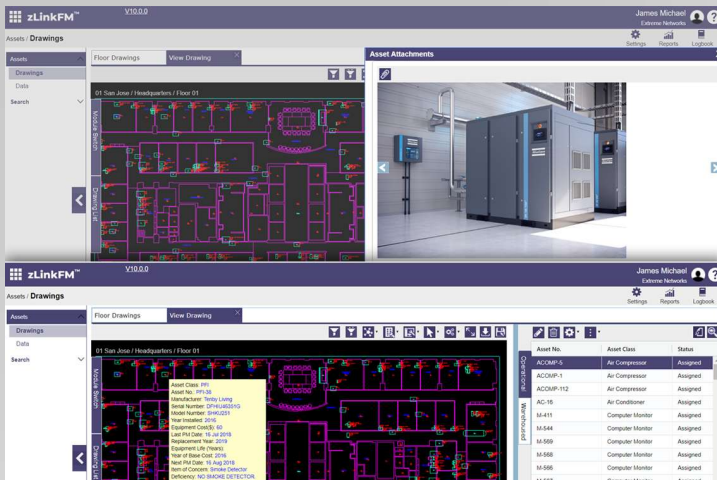
Can you easily locate all moveable and fixed assets in your facility? Do you have an organized system for equipment, office, and employee moves? Are the technical systems up-to-date in the facility? Can you easily integrate maintenance, workflow, and depreciation cost with your financial reporting?

zLinkFM™ Asset Management is the solution to these challenges. It keeps track of facility assets and the associated data; such as acquisition date, costs and depreciation. Easily locate any asset in the architectural floor plans to provide a graphical view of the location. Customize reports for a more in-depth view of facility assets' status and costs.

The screenshot displays the zLinkFM V10.0.0 interface. At the top, it shows 'Reports / Assets / Asset List by Floor'. Below this, there are navigation tabs for 'Administration', 'As Buils', 'Space', 'Scheduling', 'Employees', 'Telecom', 'Assets', 'Asset Class List', 'Asset List by Floor', 'Asset Details', 'Asset List by Class', 'Furniture', 'Work Order', 'Electrical', 'Fire and Safety', 'Mechanical', and 'Real Property'. The main content area is divided into two sections: 'Asset Distribution by Asset Class' and 'Asset Distribution by Division'. Each section features a pie chart and a corresponding table. The 'Asset Distribution by Asset Class' table shows counts for various asset types like Sensor, Personal Computer, Motors, etc. The 'Asset Distribution by Division' table shows counts for divisions like Energy Management, Process Industries, etc. Below these are two tables: 'Asset Distribution by Floor' and 'Asset List by Floor', both showing columns for Site, Building, Floor, Total No. of Assets, and Asset C.

Value Proposition

- **Increases Productivity**
Employees can automate and streamline their asset management processes
- **Improves Operational Efficiency**
Links to several other modules within zLinkFM™ to allow for complete management of the inventory
- **Produces Better Assessments**
Depreciated costs based on acquisition and conditions assessment
- **Presents Intuitive Browser Based Access**
Easy interface to move assets along with employees
- **Displays Speedy Asset Data**
Quickly locate serial numbers, maintenance info and the location of equipment
- **Provides Quick Complete Mobile Access**
Access all the details of the asset through barcode scanning



Track Assets

Helps organizations to identify missing assets, misplaced assets, or newly introduced assets with respect to zLinkFM™ database. Record the working condition of the asset to identify and allocate budget for possible replacements in near future. zLinkFM™ Asset Management supports creation of tracking projects targeted to asset classes and/or locations.

Cost Allocation

Cost and Chargeback

Manage and track asset cost breakdown (e.g. usage and depreciation), chargeback to departments, and easily export data to corporate systems.

Integrated Asset Management Solution

Easy Asset Searches

Powerful search functions allow searches using simple drop down data lists or complex queries. Search the entire enterprise for assets and their locations within a particular building, on a specific floor, a particular department or area. Search an asset by unique identifier.

Customize Asset Attributes

All facilities are different. The capability to add data attributes on the run makes zLinkFM™ customizable to suit your organization's needs. zLinkFM™ Asset Management is flexible. Include photos of the asset, documentation, specifications, warranty, and any other unique identifier that is pertinent for managing the asset's life cycle. Add, remove, or change data items easily. Add as many categories to an asset's data as needed for important asset inquiries and assessments. No programming expertise is needed.

Warehouse Asset Data

Maintain all asset information in a secure database rather than cluttering floor plan layout. Show basic asset information on the floor plan layout with complete information available in database.

Coordinate Moves

Easy-to-use tools to move and arrange assets on the floor plan. Asset and employee are linked so that related assets move with the employee. For larger-scale moves, zLinkFM™ supports the creation of multiple scenarios and monitors the approval process. Asset moves occur within the database according to a particular plan when it is approved.

Key Business Metrics

Extensive Reporting Capability

Report on asset by division, department or other categories. Maintain accurate asset counts based on asset classes provided with the necessary reports. Track and manage physical assets ownership and usage to increase organizational accountability.

Mobile Operations

Facilities Gone Mobile

zLink has made it easy to oversee operations in your organization while on-the-go. Facilities managers can track assets using mobile extensions (Android or iOS) through the camera and browser features. The camera on the mobile device can be used as barcode scanner to get all the details of the assets. The browser allows connection to zLinkFM™ Asset Management which supplies the assets data on record. Any changes made on mobile devices are synchronized to the database instantaneously.



zLink, Inc.

141 Parker Street, Suite 311, Maynard, MA 01754

Tel: 978-309-3628, Fax: 978-309-3629

www.zlinkcorp.com